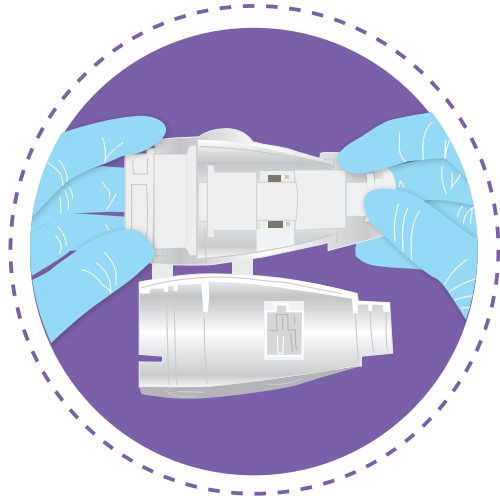


STEP 1:

Place valve liner in valve

- Place valve liner in position inside the valve by aligning the internal ridges
- The ring at top of liner should be flush around top of valve
- The tabs extending from the sides of the liner should rest on both sides of valve

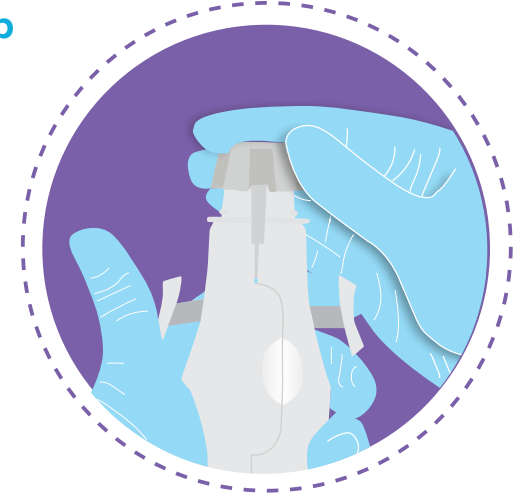


STEP 2:

Close valve and snap cap onto end of valve*

- Close the valve
- Snap cap into place at end of valve
- When closing valve, the tabs will remain on the outside of valve

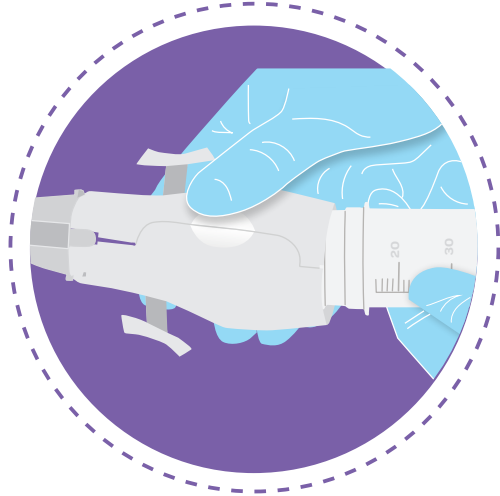
* Only perform this step with the Ipas MVA Plus®



STEP 3:

Push cylinder into base of valve

- Push cylinder into valve
- It is helpful to rock the valve slightly
- Do not twist cylinder or valve



STEP 4:

Place the O-ring

- Place O-ring into groove near tip of plunger



STEP 5:

Lubricate the O-ring

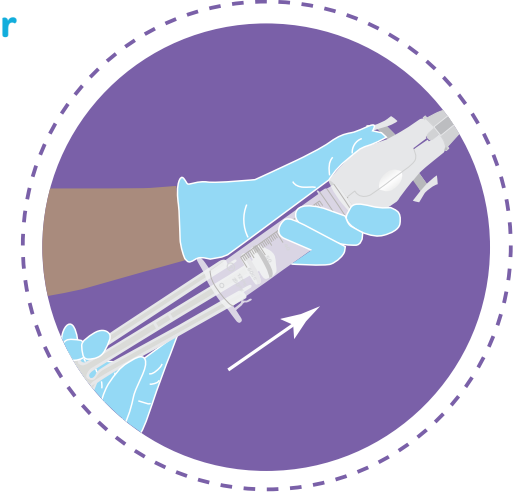
- Spread one drop of lubricant around O-ring with fingertip
- Do not over-lubricate the O-ring
- Do not lubricate other parts of the aspirator
- Use silicone lubricant supplied with aspirator



STEP 6:

Insert plunger in cylinder

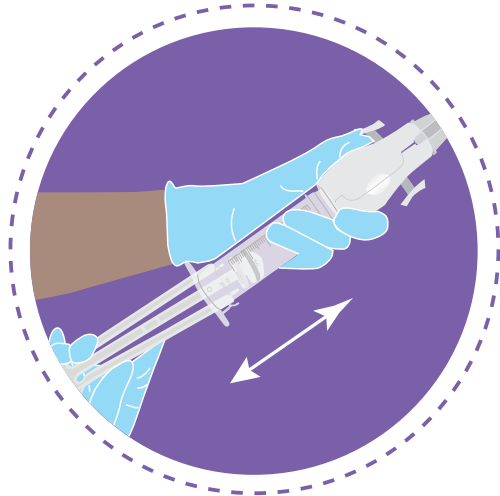
- Squeeze plunger arms
- Push plunger straight into cylinder
- Do not introduce plunger at an angle



STEP 7:

Lubricate cylinder

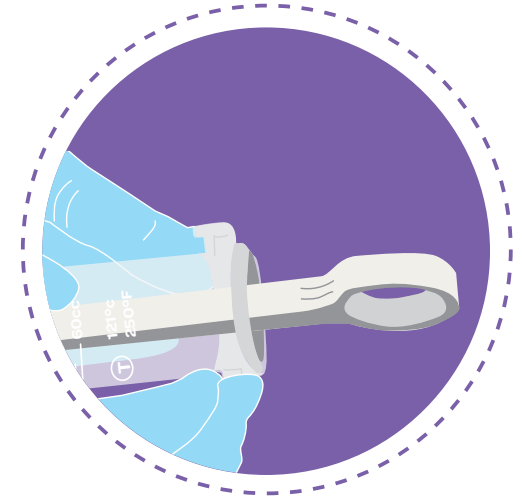
- Move plunger in and out to lubricate cylinder



STEP 8:

Insert collar stop

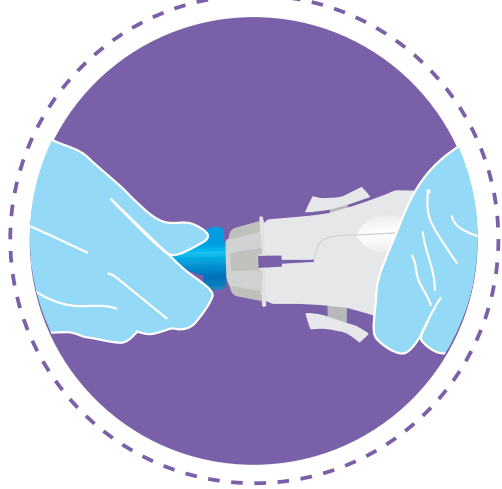
- Insert collar-stop tabs into holes in cylinder
- Ensure plunger cannot be pulled out of cylinder



STEP 1:

Remove Cannula

- Remove cannula by twisting its base and pulling it out of aspirator valve



STEP 2:

Separate adapter from cannula

- If using Flexible Karman Cannula or 3mm Cannula with Ipas MVA Plus®, adapter must be removed from cannula

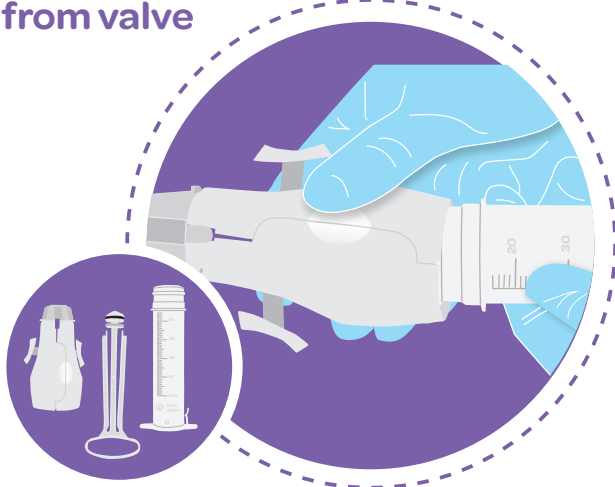
Note: for Ipas EasyGrip® Cannula, do not attempt to remove the winged-base from the cannula; it is permanently attached.



STEP 3:

Separate cylinder from valve

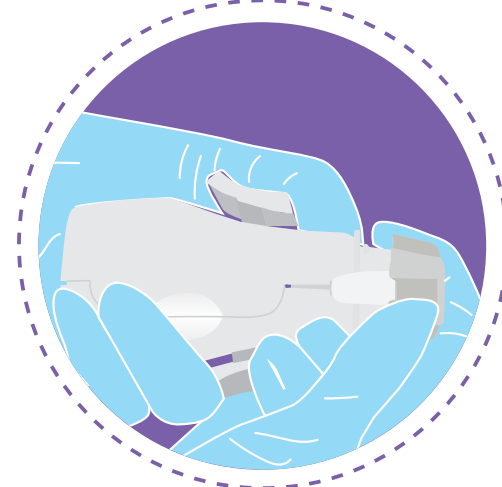
- Pull cylinder out of the valve



STEP 4:

Remove valve cap

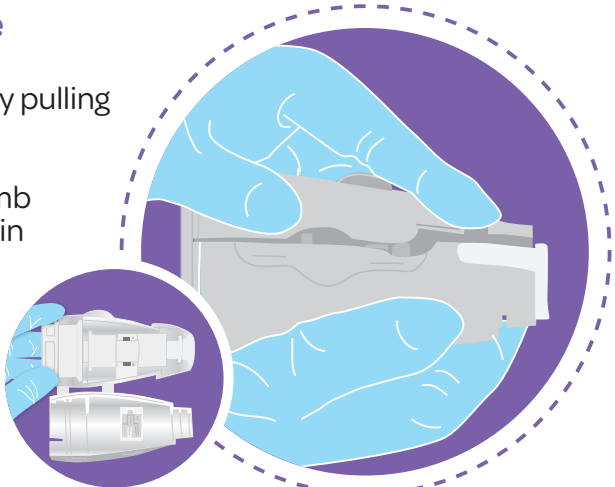
- With one hand, press down on the cap release tabs
- With other hand, pull cap off



STEP 5:

Open hinged valve

- Open hinged valve by pulling open clasp
- Place your right thumb beside the clasp (as in picture to the right) and apply pressure to assist with opening the valve



STEP 6:

Remove valve liner

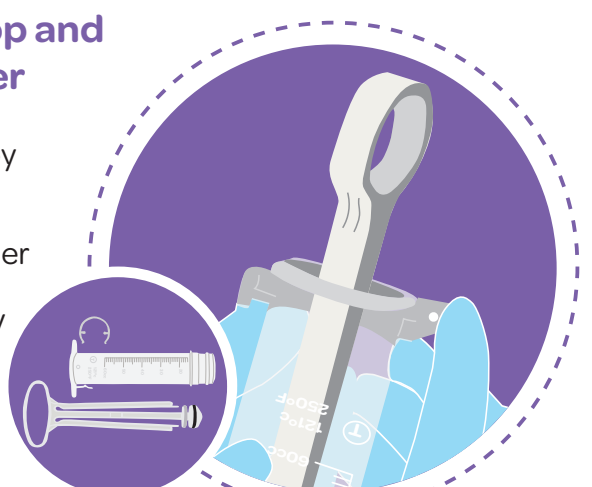
- Remove the valve liner from the valve
- For the Single Valve Aspirator, this can be done simply by pulling downward on the base of the liner



STEP 7:

Disengage collar stop and disassemble cylinder

- Disengage collar stop by sliding under retaining clip, or remove completely from cylinder
- Pull plunger completely out of cylinder



STEP 8:

Displace and remove O-ring

- Displace O-ring by squeezing its sides
- Completely remove O-ring for re-processing

